

Thank you for BBQing responsibly

HOT TOP TIPS

- Before setting up make sure you are in a designated barbecuing area
- Make sure your barbecue is placed on a flat surface raised above the ground
- Always follow the instructions on the packaging when lighting your barbecue
- Ensure you extinguish your BBQ with water and let it cool down before packing away
- Please dispose of your BBQ correctly and take all your rubbish home with you



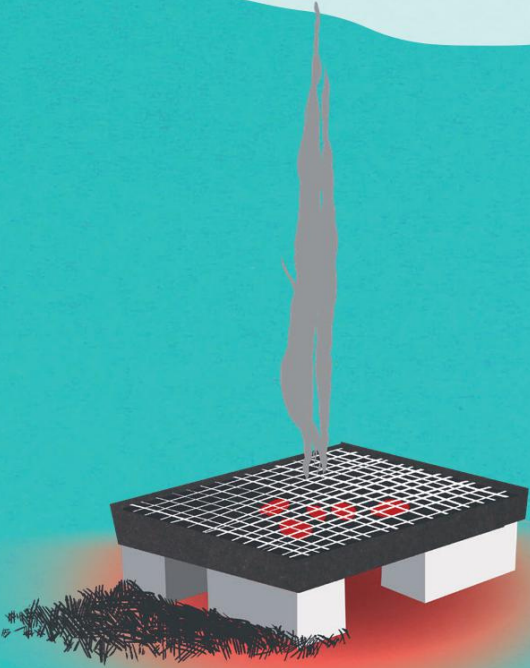
#BBQsBurnMoreThanBangers

#BBQsBurnMoreThanBangers



THANK YOU

for BBQing responsibly



BBQ's and campfires are banned in many parts of Dorset to reduce the risk of wildfire. This includes heathlands, grassland areas and some coastal locations. Look out for signs and always make sure you are in a designated barbecuing area. Barbecues that go wrong are a major source of wildfire which destroy wildlife, negatively impact the surrounding communities, and contribute to climate change.

IF YOU SEE A FIRE CALL 999



For more information visit:

www.litterfreedorset.co.uk